

# HOME CARE WORKERS: PHOTOVOICES

## Community Based Participatory Research and Photovoice in Philadelphia

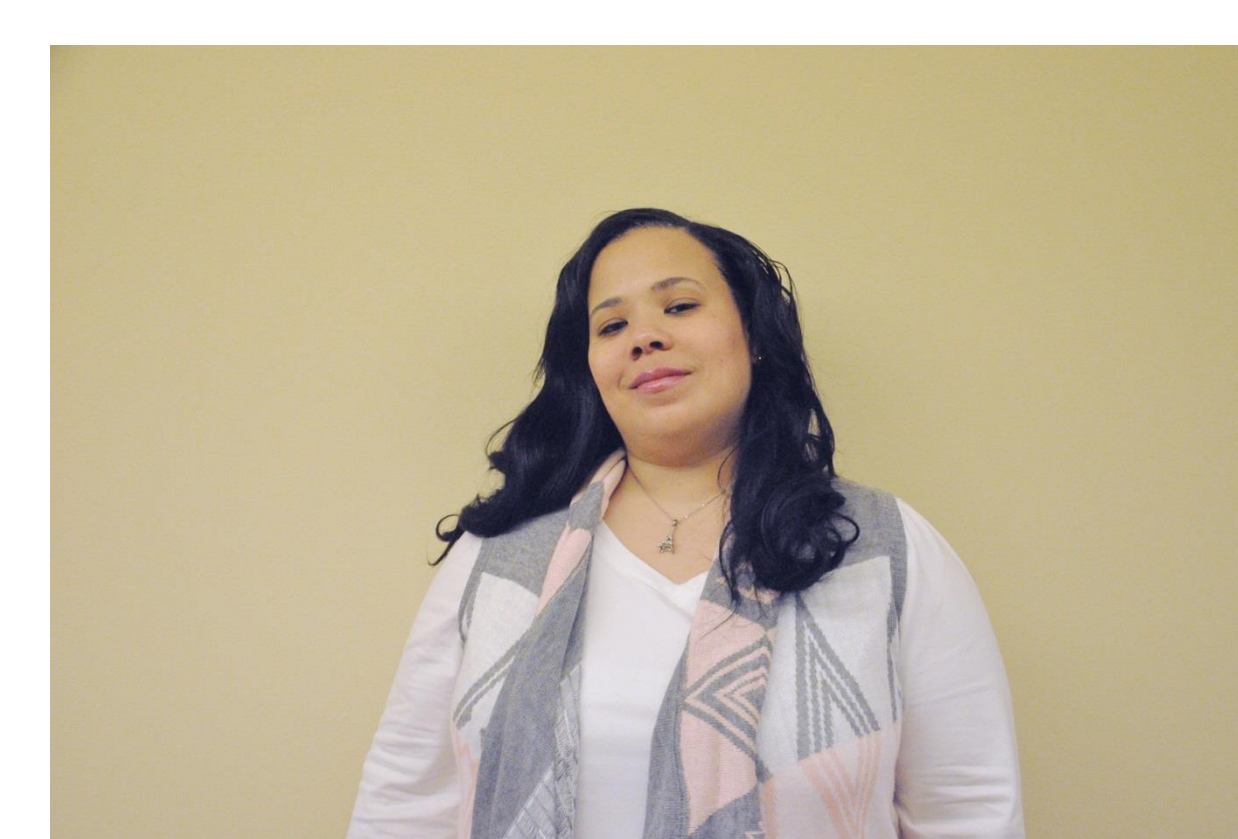
### Focus of our work

- Learn from each others' experiences
- Discover common themes
- Develop a sense of shared community with each other
- Enhance our skills in working
- Build mutually-held perspectives on the socio-economic, gender, racial and political factors influencing our profession.



### How we worked together: Photovoice

- Took photographs and told the stories behind them
- Shared our collective stories based on pictures and discussions
- Told the story of our experiences as home care workers
- Considered audiences we would like to reach to better understand our profession
- Developed messages we would like to share with those who can help make positive changes



### Our thanks to

Paraprofessional Healthcare Institute  
HomeCare Associates of Philadelphia  
Sarah Lawrence College, Master of Arts in Health Advocacy  
Brook, Colleen, Deane, Karen, Karen, Sam and Zein and the  
extraordinary generosity of our friends and family

