



**Together in Care<sup>®</sup>:**  
**Empowering Direct Care Workers and Family Caregivers**  
**to Meet Growing Demand for Care**



## Funder Acknowledgement

This project would not be possible without the generous support of:



The  
**John A. Hartford**  
Foundation

*We invest in aging experts and practice innovations that transform how the care of older adults is delivered.*

*Since 1982, The John A. Hartford Foundation has awarded more than \$724 million in grants to enhance the health and well-being of older people.*

**The Direct Care Worker and Family Caregiver Initiative (Together In Care)**, a multi-year collaboration between PHI and the National Alliance for Caregiving, serves as a bold step toward strengthening the relationship between these essential caregivers.





## Issue Brief Highlights

- Offers recommendations and considerations at the state and federal levels
- Focuses on improving job quality as central to strengthening the partnership
- Recognizes the need to increase the evidence-base
- Lays a foundation for expanded dialogue and investment





# Setting the Context:

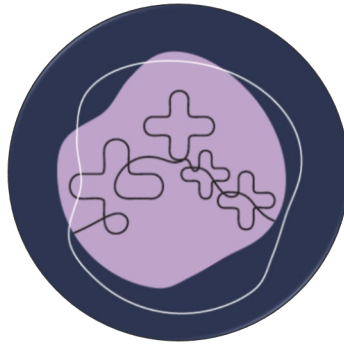
## Direct Care Worker and Family Caregiver Perspectives



**PHI** QUALITY CARE  
THROUGH  
QUALITY JOBS



## Recommendations



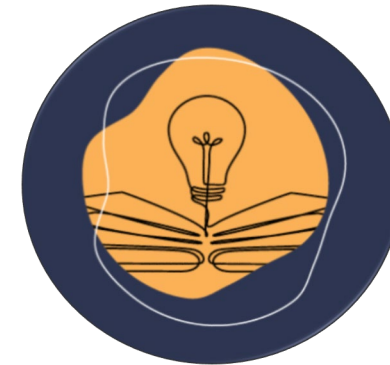
**1. Care Team  
Integration**



**2. Expanding Access to  
Self-Direction**



**3. Matching Service Registry  
Options**



**4. Investing In  
Research & Evaluation**

## 1) Care Team Integration

- Communication & problem-solving pilot and demonstrations—HRSA
- Hospital at home metrics and innovation—Congress and CMS
- Explore advanced roles—States and provider employers
- Other recommendations in the policy brief: telehealth flexibility, health information access, expanded training for direct care workers and family caregivers



## 2) Expanding Access to Self-Direction

- Technical assistance to states to support outreach with regard to self-direction, with a focus on expanding reach with underserved communities.
- Explore opportunities to expand self-direction in every state—States and consumer advocates
- Examine models that allow family caregivers to take on paid care, prioritizing effective training and supports, the individual's autonomy, & community integration

### 3) Matching Service Registry Options

- Create Effective Tools that Improve Direct Care Jobs and Increase Access to Quality Care
- Commission/fund the evaluation of matching service registries—CMS
- Convene and collaborate with an inclusive audience on registry design—State Medicaid programs
- Expand the use of registries—State Medicaid programs

## 4) Invest In Research & Evaluation

- Inform policy solutions by increasing the evidence base
- Fund and evaluate interventions and demonstrations to identify what works—Federal and State Agencies
- Fund and evaluate the gray market—U.S. Department of Labor and Department of Health and Human Services
- Explore additional topics impacting direct care workers and family caregivers—policymakers, philanthropy, providers, researchers



**Together, they care for us — and it's time to care for them.**





# Together in Care Webinar: Attendee Q&A





**Amy Robins**  
Senior Director of Policy  
[arobins@phinational.org](mailto:arobins@phinational.org)

[PHInational.org](https://www.phinational.org)



**Antoinette 'Toni' Gingerelli**  
Director, Policy & Advocacy  
[toni@caregiving.org](mailto:toni@caregiving.org)

[caregiving.org](https://www.caregiving.org)

Read our full Together In Care Issue Brief at:  
<https://www.togetherincare.org/>